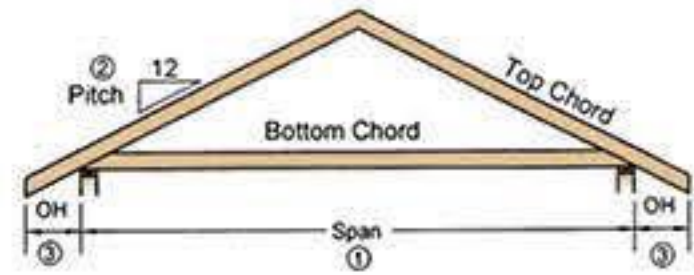
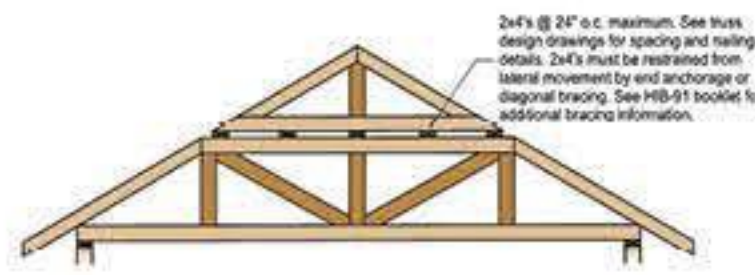


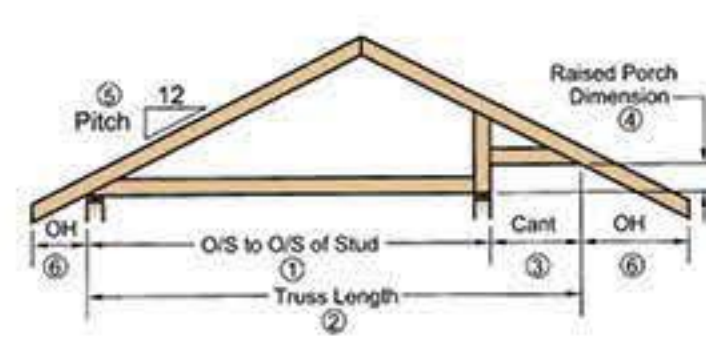
### STANDARD TRUSS



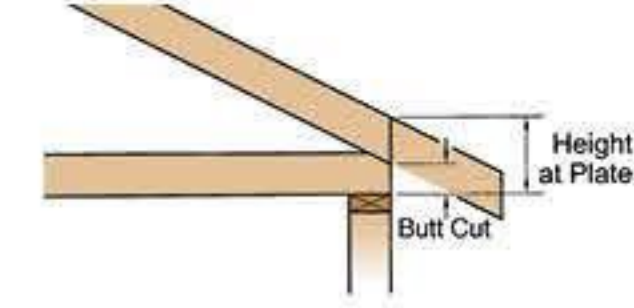
### PIGGY BACK ATTACHMENT



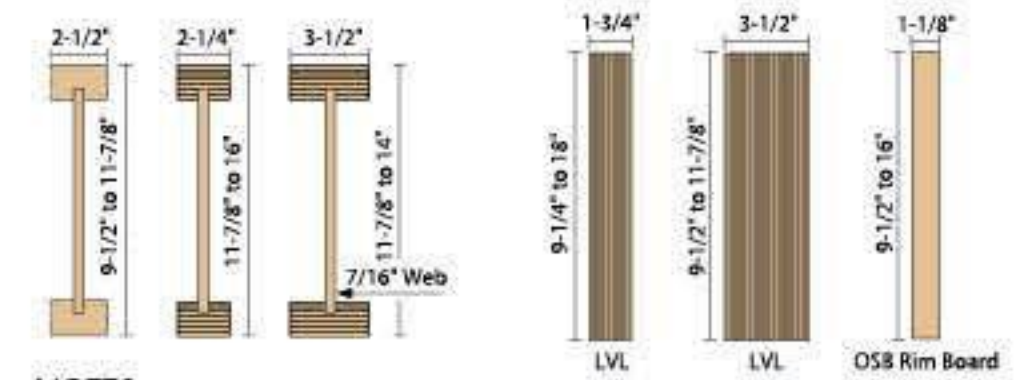
### RAISED PORCH TRUSS



### HEEL DETAIL

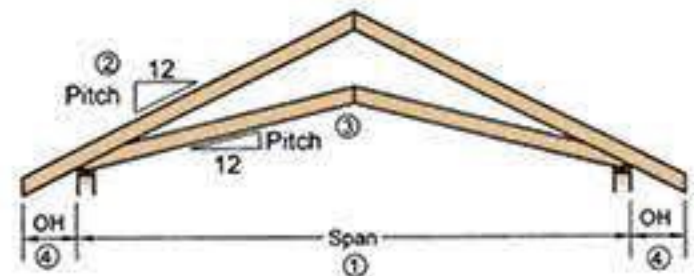


### ENGINEERED WOOD

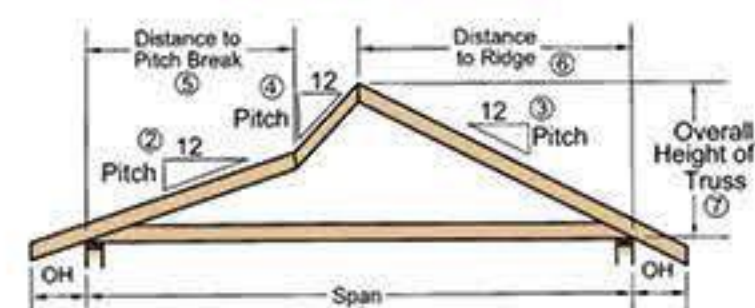


NOTES:  
LVL & Joist Stock Lengths up to 48'.  
Deliveries Direct to the Jobsite.  
Stock Sizes Shown. Many More Sizes Available.

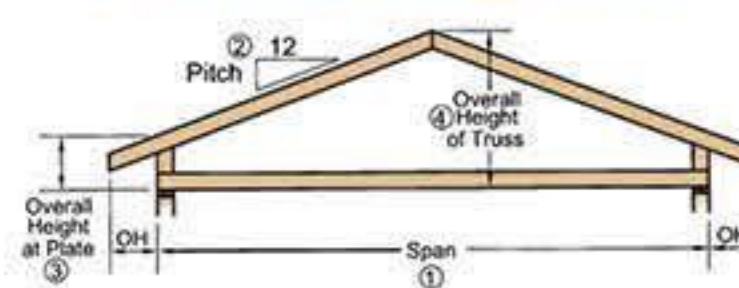
### SCISSORS TRUSS



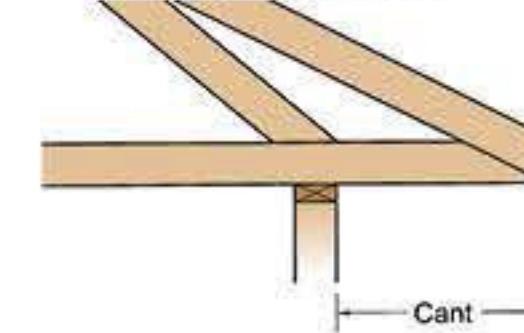
### SHED PORCH



### STUB END / RAISED HEEL

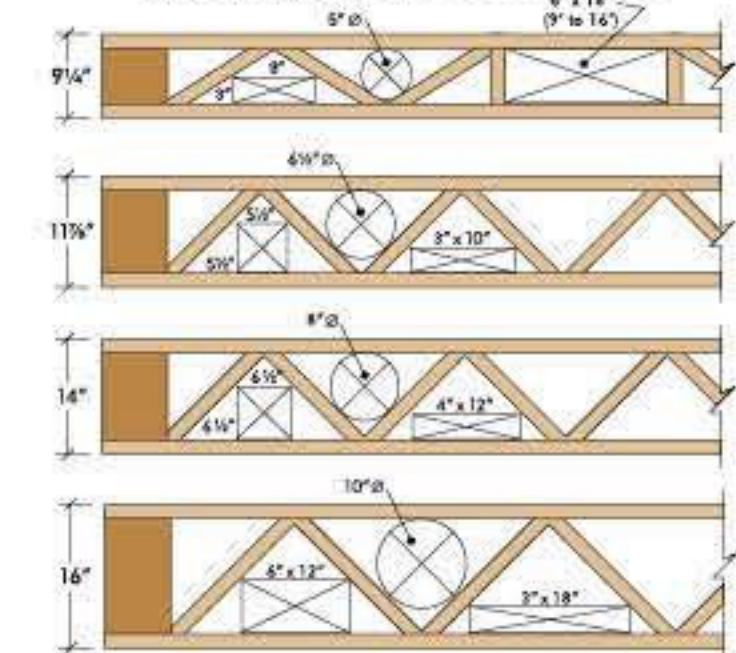


### CANTILEVER

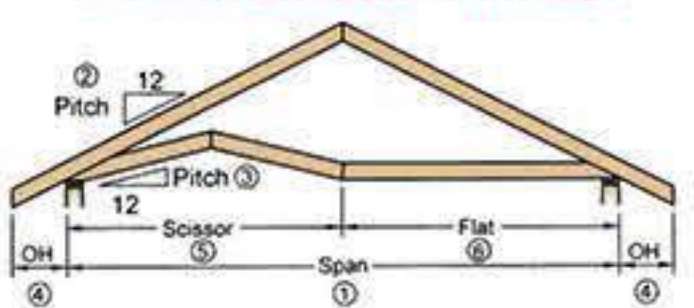


### OPEN JOIST

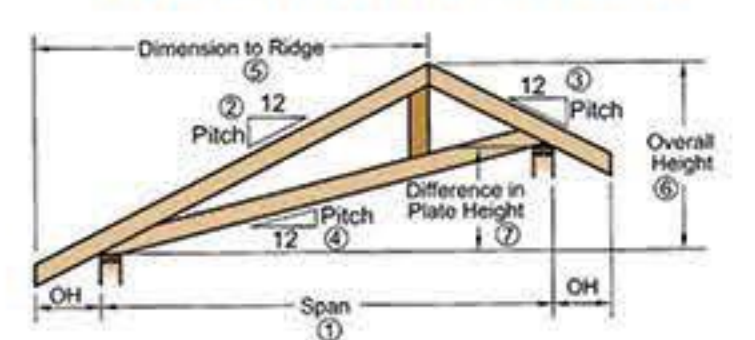
Mechanical Service Clearance



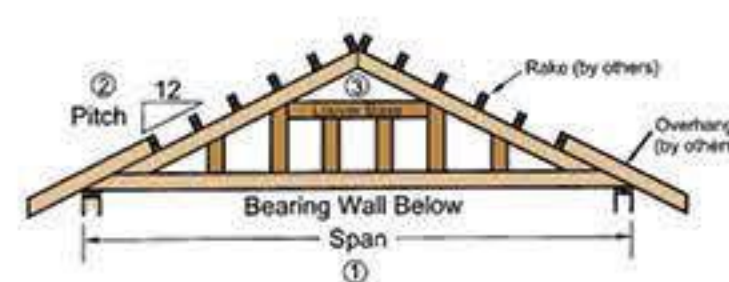
### SPECIAL SCISSORS TRUSS



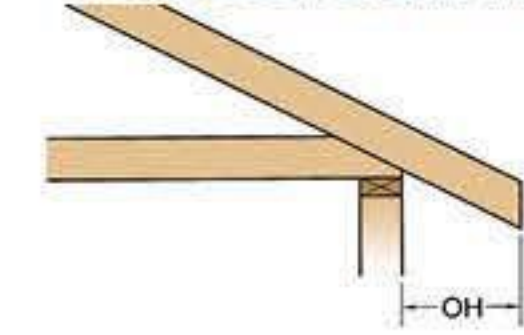
### DUAL PITCH HALF SCISSOR



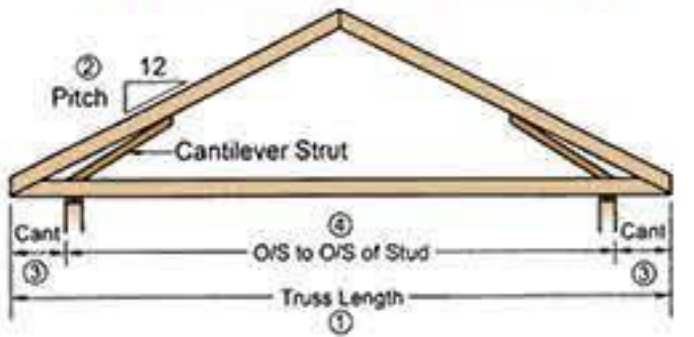
### DROPPED GABLE END



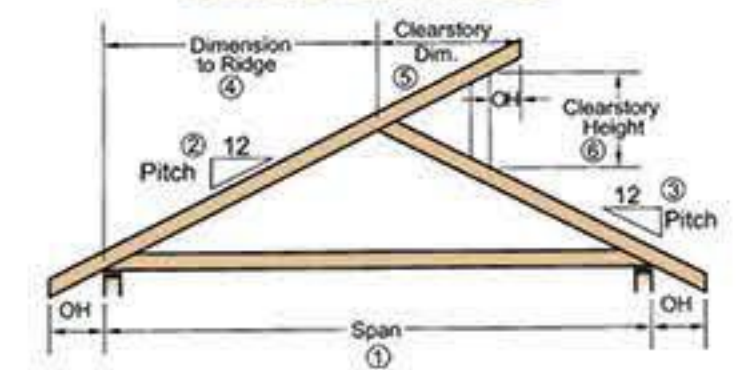
### PLUMB CUT OVERHANG



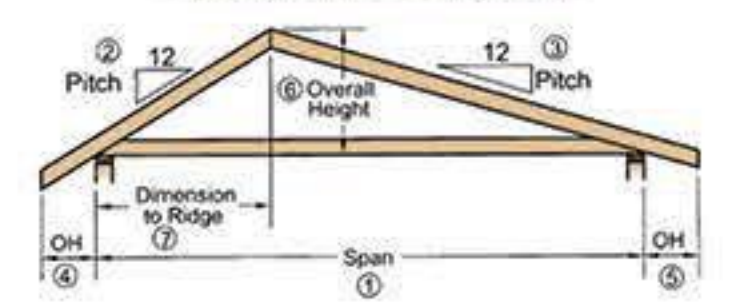
### CANTILEVERED TRUSS



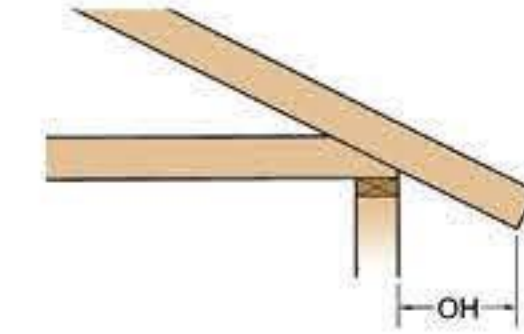
### CLEARSTORY TRUSS



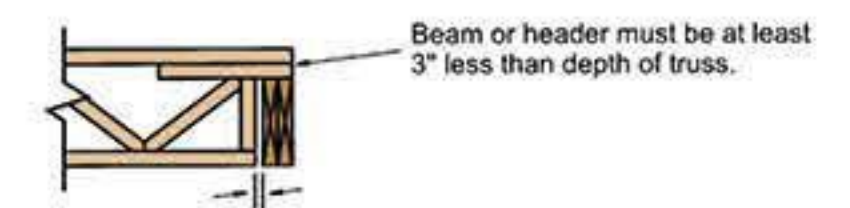
### DUAL PITCH TRUSS



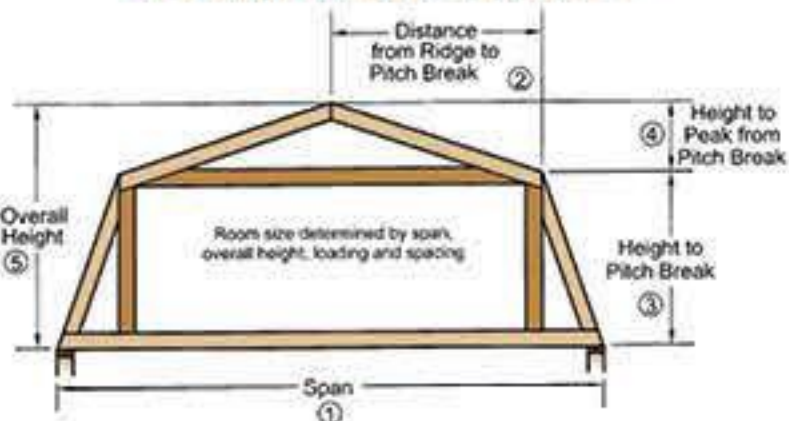
### SQUARE CUT OVERHANG



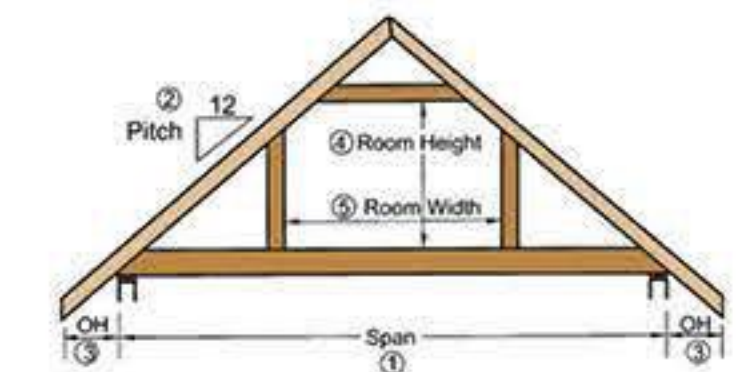
### TOP CHORD BEARING



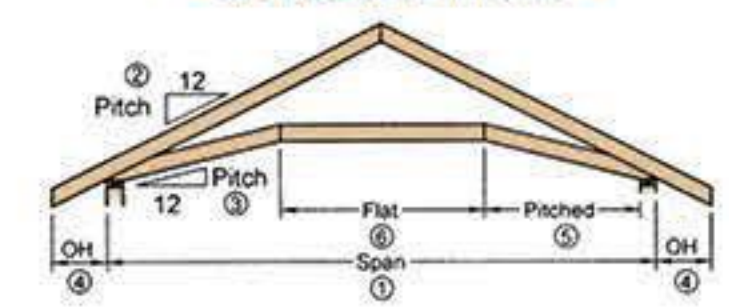
### GAMBREL ATTIC FRAME



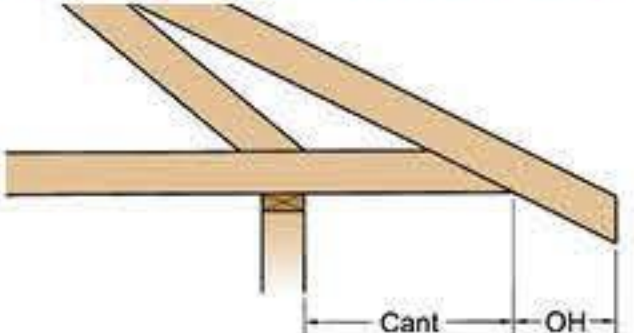
### ATTIC FRAME TRUSS



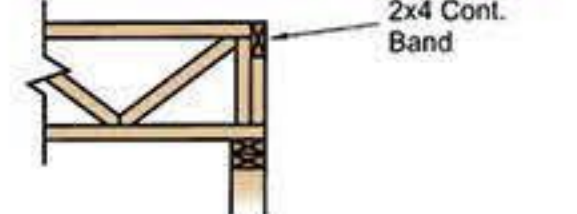
### CAMBERED TRUSS



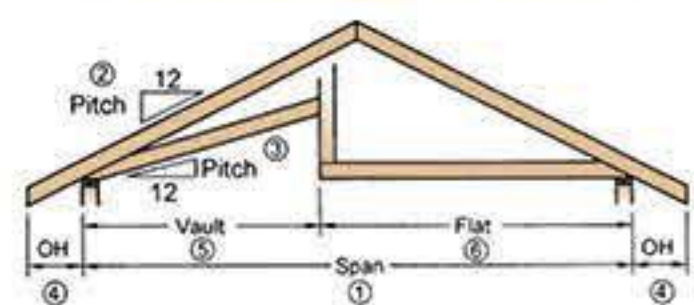
### CANTILEVER & OVERHANG



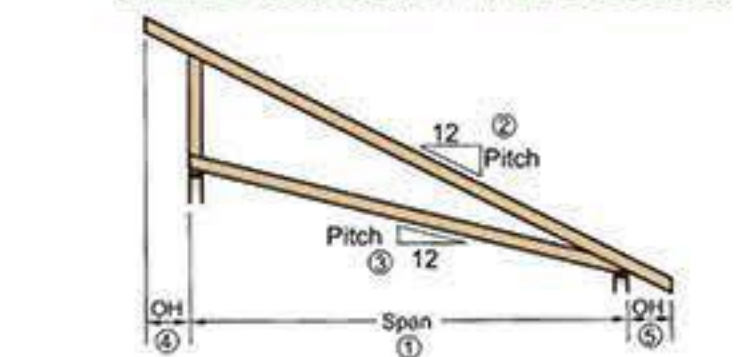
### BOTTOM CHORD BEARING



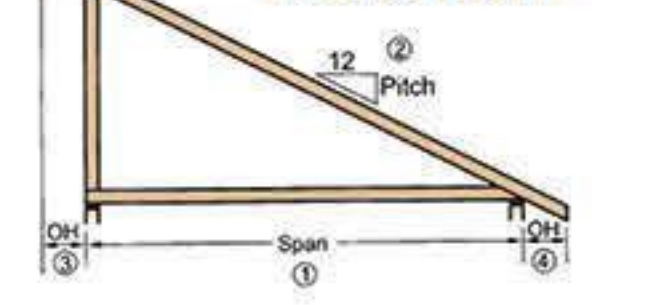
### VAULTED CEILING TRUSS



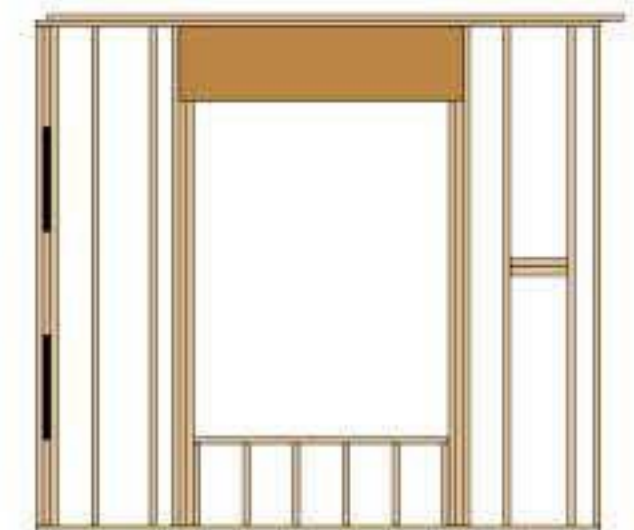
### MONO SCISSOR / HALF SCISSOR



### MONO PITCH



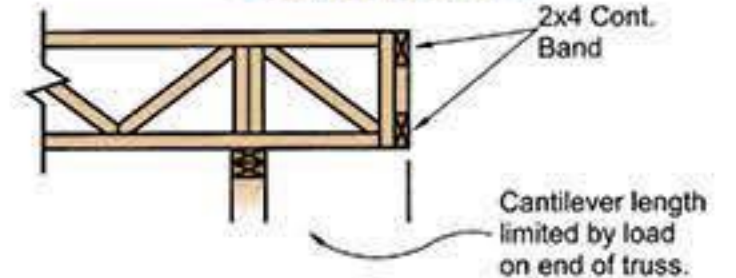
### WALL PANEL



### TCB WITH BLOCKING



### CANTILEVER



All trusses are custom built to meet your job specifications.  
The shapes shown here are a small sample of what can be done.